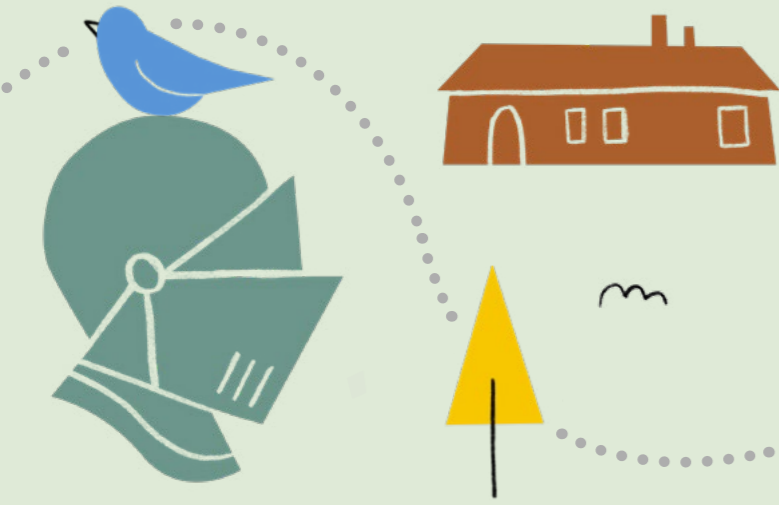


EXPLORING YORK

Exploring York and all that it has to offer has never been so easy.

We've routes for all ages and abilities, ready and waiting for you to explore.

Whilst you're out and about, remember let's be respectful and patient of others. Let's keep as safe as possible by following social distancing measures.



Acomb to Rufforth trail

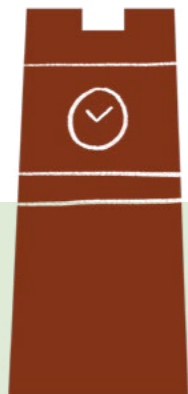
 Distance
4 miles

 Est. Time
1:30hrs

If you're planning to travel to, from and through York we want to make sure you have access to travel information that will help keep you safe and be able to plan your journey.

You can explore information about active travel and its benefits by downloading our Cycle route maps, Walking Guides and information on our popular Urban Cycle Skills Sessions at www.itravelyork.info

For further information on how to explore York safely go to www.visitork.org



Harewood Whin

The middle part of this walk passes through some lovely scenic countryside full of wildflowers. On your left you will see a hilly area known as Harewood Whin, formerly the main site for disposal of York residents waste. After 30 years of operation the site closed in 2019 and is now being converted in wildflower meadows. Some small lakes have been created and volunteers have been busy planting trees. The area is already starting to attract a wide variety of wildlife.



Poppies

Bright red poppies grow in abundance in some of the fields adjacent to this walk. Artificial poppies are often worn by people on Remembrance Day as a reminder of all the people who died during wars. Poppies were a common sight at some of the main battlegrounds of the First World War.

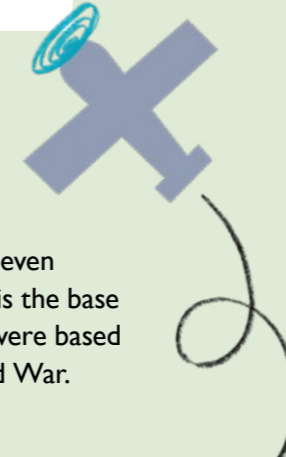
Did you spot any birdlife on your walk?

- Blackbird
- Blue tit
- Bullfinch
- Chaffinch
- Chiffchaff
- Goldfinch
- Great tit
- Great-spotted woodpecker
- Greenfinch
- House martin
- Robin
- Swallow
- Swift
- Whitethroat
- Willow warbler
- Vulture!?
-



Flying things

As you head towards Rufforth, look up and you may see all kinds of flying contraptions. These range from silent gliders to light aircraft, microlights and even gyrocopters. Nearby Rufforth Airfield is the base for all these aircraft. Halifax bombers were based at this airfield during the Second World War.



A welcome return

If you suddenly see a massive eagle-like bird soaring above you the chances are that you have just seen a Red Kite. These huge birds are now a common sight in Yorkshire, but in the past they were hunted to extinction in England. After the birds were reintroduced to Yorkshire at Harewood House in 1999 they thrived and quickly spread across the region.

Bug hunt! What critters can you find?



Spider



Snail



Worm



Woodlouse



Millipede



Shrimp



Leech

.....



Rufforth

Rufforth is a historic village mentioned in the Domesday Book of 1086. The local churchyard is reputed to be the burial site for casualties from The Battle of Marston Moor. This great battle took place nearby during the First English Civil War in 1644.



Honeysuckle

In summer countryside walks are filled with the unforgettable aroma of honeysuckle. The lovely scent of this flower has been recognised by the perfume industry and many of the most popular perfumes currently on sale attempt to copy its delightful fragrance. The scent of honeysuckle is at its strongest at night and is very attractive to moths.

Acomb to Rufforth trail

1 Start

Start from the Fellbrook Avenue bus stop on Beckfield Lane. Bus 5a.

2

Walk along Beckfield Lane and turn left into Knapton Lane.

3

After passing a small copse on the right the road becomes Ten Thorn Lane. The lane has a pavement which continues to Knapton.

4

Upon reaching Knapton village continue walking straight ahead. The road now becomes Main Street.

5

Upon reaching New House Covert (Private Road) turn left and walk straight ahead along this lane. Signposts now indicate the start of this walk.

Look out for bright red poppies growing in abundance in some of the fields adjacent to this walk.

6

The path leads towards a tunnel which passes below the Outer Ring Road. After passing through the tunnel turn right and follow the footpath which runs parallel to the Outer Ring Road.

7

Upon reaching a junction turn left and head along Moor Lane a partially surfaced track signposted as a bridleway. Turn left again after a few metres.

8

The footpath forks at this point. Take the public footpath on the right.

9

The footpath crosses a stream before entering a flower-rich area.

Look out for a tall spiky plant with purple flowers. This is the teasel. The flowers are very attractive to wildlife including bees, butterflies and seed-eating birds such as goldfinches.

10

The footpath crosses Tinker Lane. Look for a footpath on the opposite side of the road which runs along the edge of a copse.

11

After passing through a gate turn right and head along a tarmacked footpath which runs adjacent to a hedge and leads into Rufforth.

12

The footpath turns left and leads into Milestone Avenue.

13

Turn right at the end of Milestone Avenue and walk along Wetherby Road to reach the village store which also serves refreshments. Or turn left and walk for a few metres to reach a bus stop with buses travelling back to York.

14

Refreshments can be obtained from 'The Old School'.



Accessibility

The walk is accessible to all. The middle section of the walk is slightly hilly.

Buses

To reach the start of the walk take bus 5a to the Fellbrook Avenue bus stop on Beckfield Lane. To return to the city centre from Rufforth take bus 412 from outside The Tankard Inn or The Old School, both on Wetherby Road.